

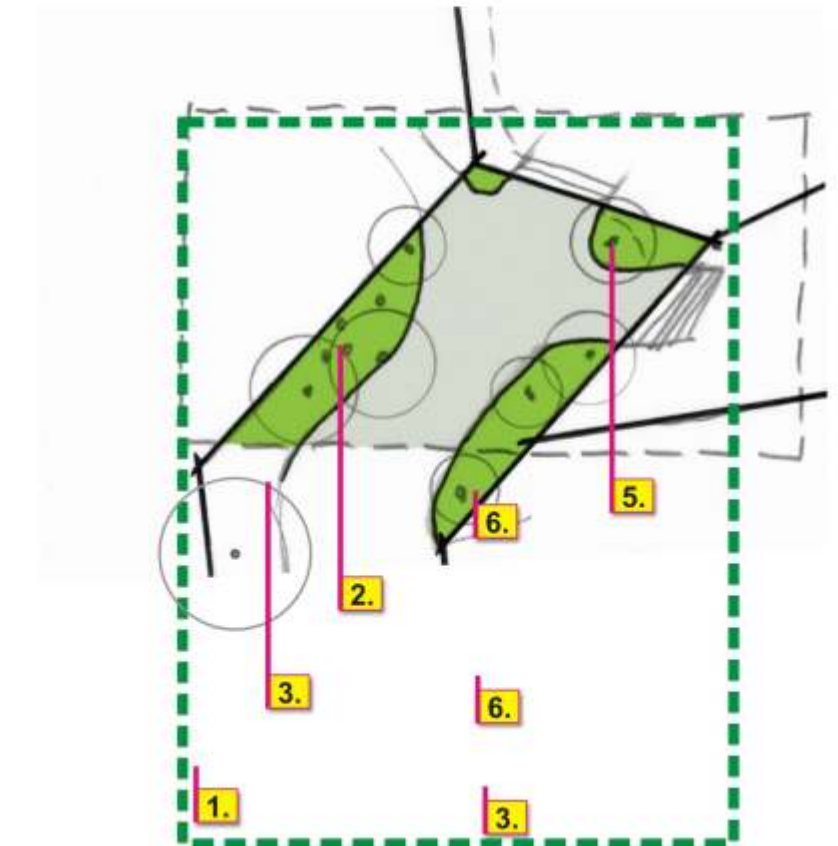
STUDY AREA 6 - BICKLEIGH VALE ROAD NORTHERN END

WEST SIDE OF ROAD:

1. Remove Pittosporum.
2. Remove dead fern stumps.
3. Remove Privet.

EAST SIDE OF ROAD:

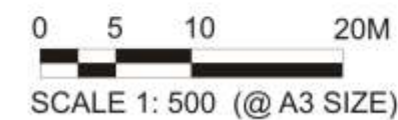
4. Remove Ivy.
5. Remove dead fern stumps.
6. Remove stumps each side of gateway to No. 28 and replant 2 *Acacia prominens*.



BICKLEIGH VALE ROAD NORTHERN END NODE

Title of sketch: VEGETATION STUDY AREA 6 - NOT TO SCALE

PROJECT NAME: BICKLEIGH VALE ROADSIDE VEGETATION MANAGEMENT PLAN



CDA Design Group Pty Ltd
Landscape Architecture & Urban Design
ACN 097 027 113
Job No: 10043
Date: 14/07/10
Drawn by: BG/GD
Drawing No: Sk06

