



4.
1.

4.



3.

3.

2.

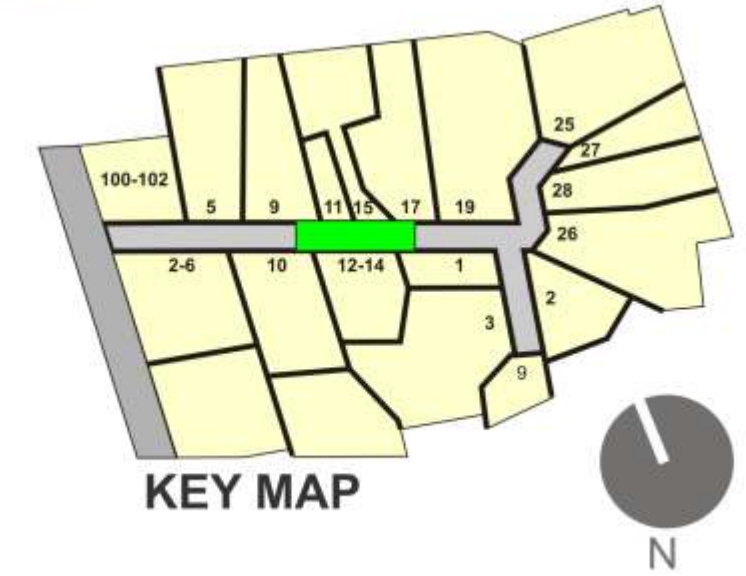
3.



6.

7.

5.



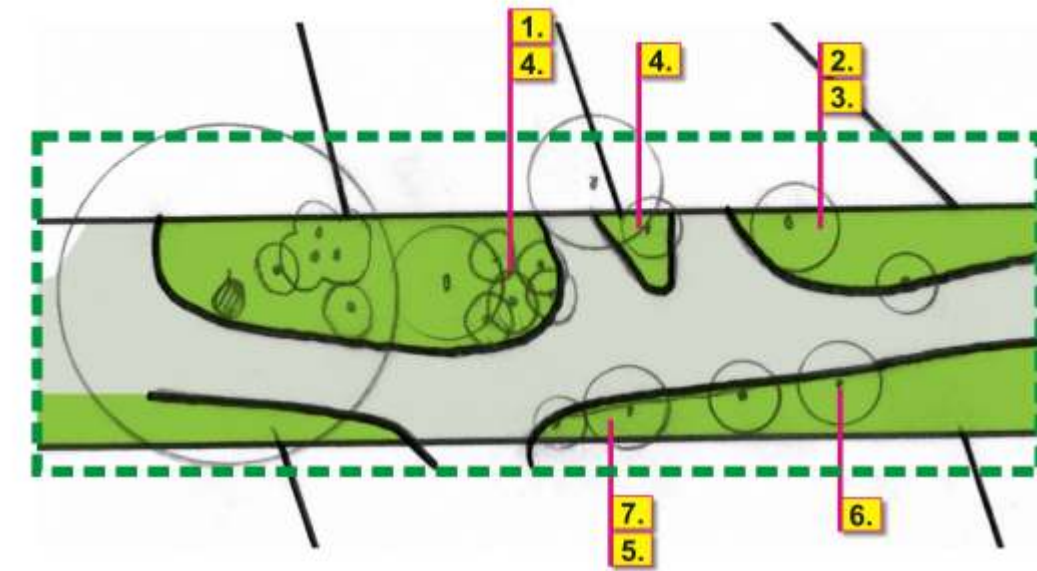
STUDY AREA3 - BICKLEIGH VALE ROAD DRIVEWAY JUNCTION NODE

NORTH SIDE OF ROAD:

1. Remove Ivy groundcover.
2. Remove Pittosporum but retain Hawthorn.
3. Remove dead eucalypts and replace with an alternative indigenous species.
4. Remove foliage as required to maintain sight lines to edge of driveways - this may include removing tall shrubs with stems within one metre of the road or driveway edges.

SOUTH SIDE OF ROAD:

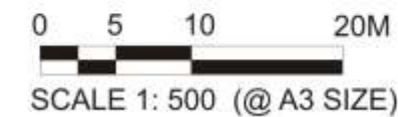
5. Remove Ivy groundcover.
6. Remove sucker growth from Hawthorn and prune back to a single trunk.
7. Monitor growth of Jasmine on fenceline and cut back as necessary to ensure that it does not get out of control; cut back where growing up trees.



DRIVEWAY JUNCTION NODE PLAN

Title of sketch: VEGETATION STUDY AREA 3 - NOT TO SCALE

PROJECT NAME: BICKLEIGH VALE ROADSIDE VEGETATION MANAGEMENT PLAN



CDA Design Group Pty Ltd
Landscape Architecture & Urban Design
ACN 097 027 113
Job No: 10043
Date: 14/07/10
Drawn by: BG/GD
Drawing No: Sk03

