

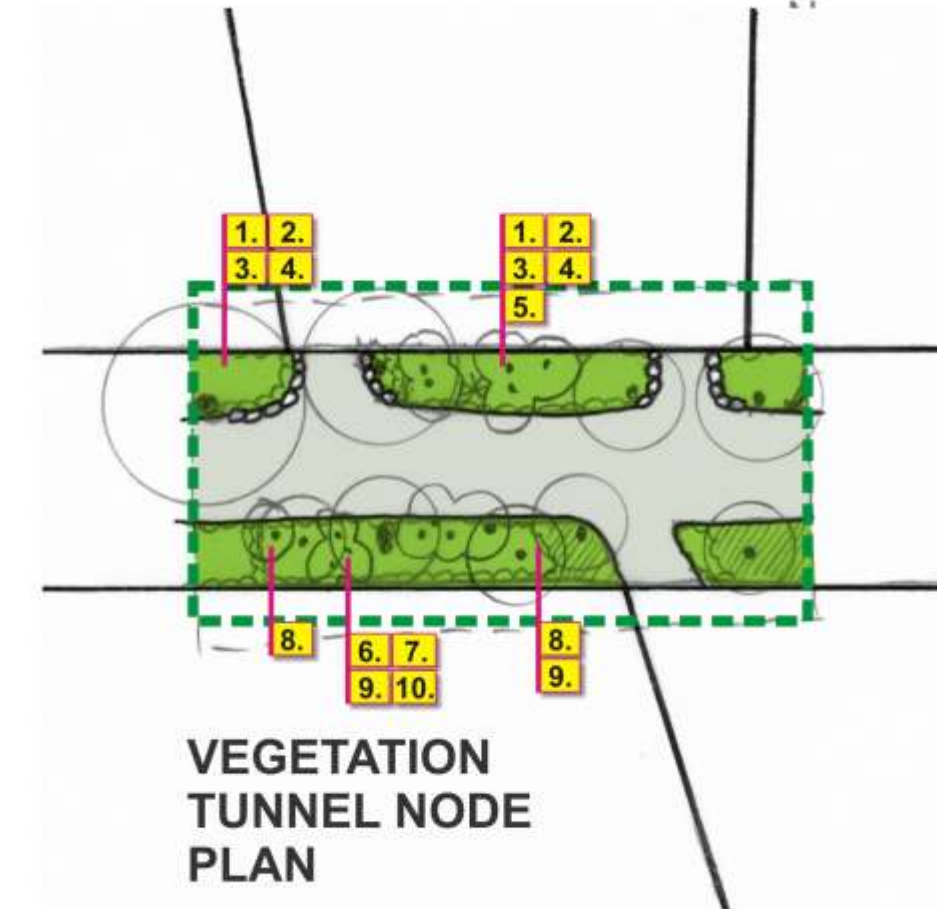
**STUDY AREA 2 - BICKLEIGH VALE ROAD 'TUNNEL'**

**NORTH SIDE OF ROAD:**

1. Prune shrubs over the roadway to maintain a minimum clearance of 3.6m overhead.
2. Selectively thin out or prune Cotoneaster but maintain tunnel form.
3. Retain Vinca groundcover.
4. Remove Privet.
5. Remove *Pittosporum undulatum* but retain *P.ralphii*.

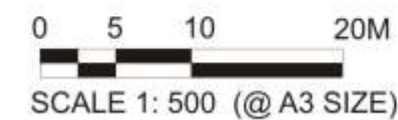
**SOUTH SIDE OF ROAD:**

6. Prune shrubs as required to maintain a minimum clearance of 3.6m overhead.
7. Selectively thin out or prune Cotoneaster but maintain tunnel form.
8. Retain Vinca groundcover.
9. Remove Ivy.
10. Remove Privet.



Title of sketch: VEGETATION STUDY AREA 2 - NOT TO SCALE

PROJECT NAME: BICKLEIGH VALE ROADSIDE VEGETATION MANAGEMENT PLAN



CDA Design Group Pty Ltd  
Landscape Architecture & Urban Design  
ACN 097 027 113  
Job No: 10043  
Date: 14/07/10  
Drawn by: BG/GD  
Drawing No: Sk02

