

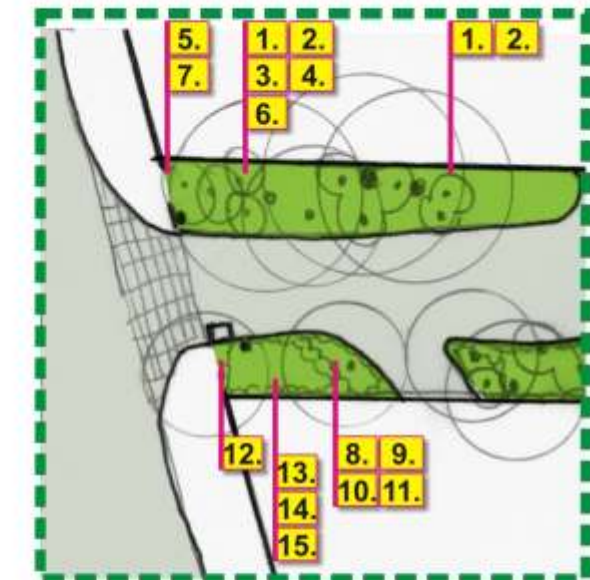
### STUDY AREA 1 - BICKLEIGH VALE ROAD ENTRY

#### NORTH SIDE OF ROAD:

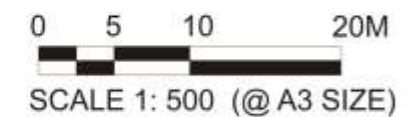
1. Generally prune shrubs with stems inside 2m from road edge to maintain visibility for traffic. Mature weed species can be retained but canopies should be lifted to 2.5m above ground.
2. Remove any sucker growth from shrubs or trees. Prune young Oak back to a single trunk.
3. Remove and poison Elm suckers.
4. Prune Abelia and Cotoneaster by removing up to one third of multiple stems.
5. Prune Rose.
6. Remove Pittosporum undulatum.
7. Plant a Banksia Rose on the short wire fence.

#### SOUTH SIDE OF ROAD:

8. Generally prune shrubs with stems inside 2m from road edge to maintain visibility for traffic. Mature weed species can be retained but canopies should be lifted to 2.5m above ground.
9. Remove any sucker growth.
10. Remove *Acacia mearnsii* in poor condition.
11. Remove Privet.
12. Consider removal of Poplar to Pembroke Road nature strip - the leaning habit of this tree was caused by overshadowing from a large Pine removed from inside the corner of Mistover in 2008. The Oak to the rear will grow to be a suitable replacement.
13. Consider planting a Banksia Rose on the Mistover fence corner to soften its appearance.
14. Install a leaf litter trap to the pit at the end of the road drain.
15. Prune and lift canopy of young Oak.



### ENTRY NODE PLAN



Title of sketch: VEGETATION STUDY AREA 1 - NOT TO SCALE

PROJECT NAME: BICKLEIGH VALE ROADSIDE VEGETATION MANAGEMENT PLAN

CDA Design Group Pty Ltd  
Landscape Architecture & Urban Design  
ACN 097 027 113  
Job No: 10043  
Date: 14/07/10  
Drawn by: BG/GD  
Drawing No: Sk01

