

Australian

HOUSE and GARDEN



Sept 1949

OCTOBER, 1949 2/-

FURNISH FOR £50

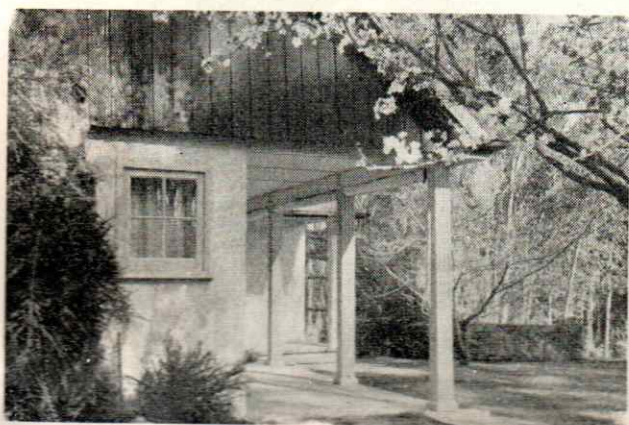
Page 32

Keith Christie



BRAEMARK

*This lovely country cottage in Victoria
is set amongst tangled shrubs and vines.*



Braemark, country cottage of Mr. Thomas Harris of Mooroolbark, Victoria, has a charming air of refinement and quiet beauty given by the charm of the home and the tangled gardens. In the semicircular grass terrace enclosed by the stone wall, wrought iron panels provide a view of the wild garden beyond.

The house is built of cement sheets, rough plaster and washed over a very pale biscuit color. The gables are filled in with 6 by $\frac{1}{2}$ inch oiled hardwood boards and cover strips. The roof is of corrugated cement stained sepia color, and since stone is available in the district this material was used for the chimneys.

A driveway of limestone toppings (also a local material) takes one to the flagged area outside the entrance door. Although the site is a steep one, an approach was achieved from the roadway to the front door and one enters the house without ascending or descending any steps.

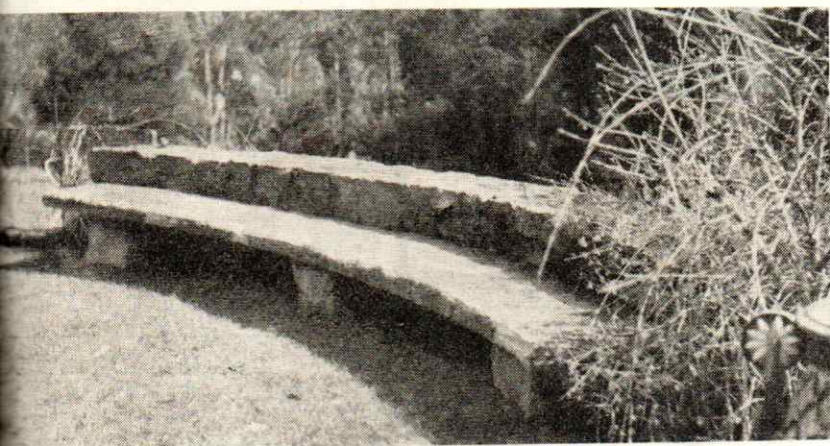
By Edna Walling

At left the picture shows the simple gate of "Braemark", lovely country cottage of Mr. Thomas Harrison of Mooroolbark, Victoria.

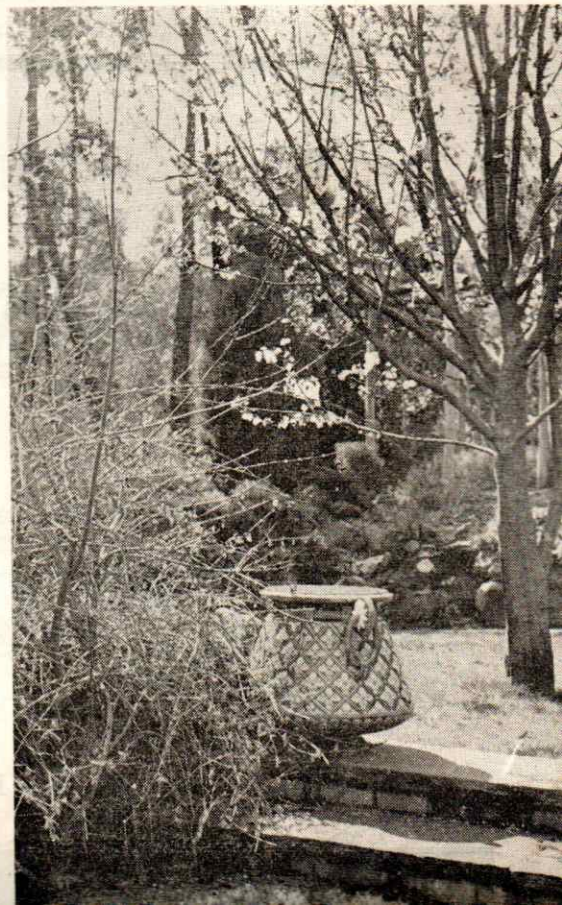
These grooved posts (below, opposite), and the long step seem to have given "Braemark" some of their own rugged individuality.

At right, the drive in to "Braemark" showing the lovely effect of tree, lawn and shrubs.

This seat (below) is formed in one section of the semicircle wall which retains the grass terrace at "Braemark". It is just a simple slab of concrete set up on blocks of stone.



The continuation of the verandah steps showing how they connect with the terrace wall (below).



On the west of the house a grass terrace has been formed on a level eleven inches below the verandah paving. To soften this drop, a long broad step runs the whole length of the building and extends across to connect with the wall of the terrace as shown in one of the pictures. Apart from the interest that this feature provides, the practical consideration of cost in the matter of stone walling made it desirable to keep the retaining wall as low as practicable without weakening the effect. It is interesting to note how often little practises of economy can affect to advantage, rather than disadvantage, the design of houses and gardens.

Entering the gate the steep bank on the left has been out-cropped with large boulders and planted with rock plants. Nearer the house the acuteness of the slope has been dealt with by a dry built stone retaining wall. The house itself looks out into a bushland of Messmate, Candlebarl Gums, Lightwoods and Wild Cherries.